



MONTHLY MEMBERSHIP PROGRESS REPORT

District 105BS

Results as of: 06/30/2019

GMT: JOOST PAIJMANS

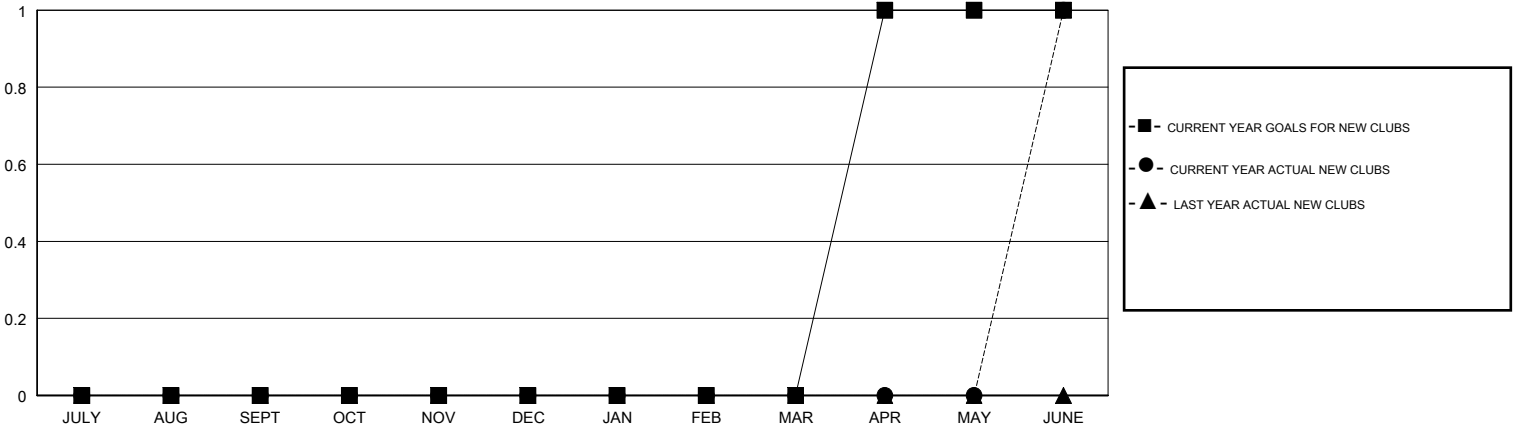
LOCATION ENGLAND

GMT CA

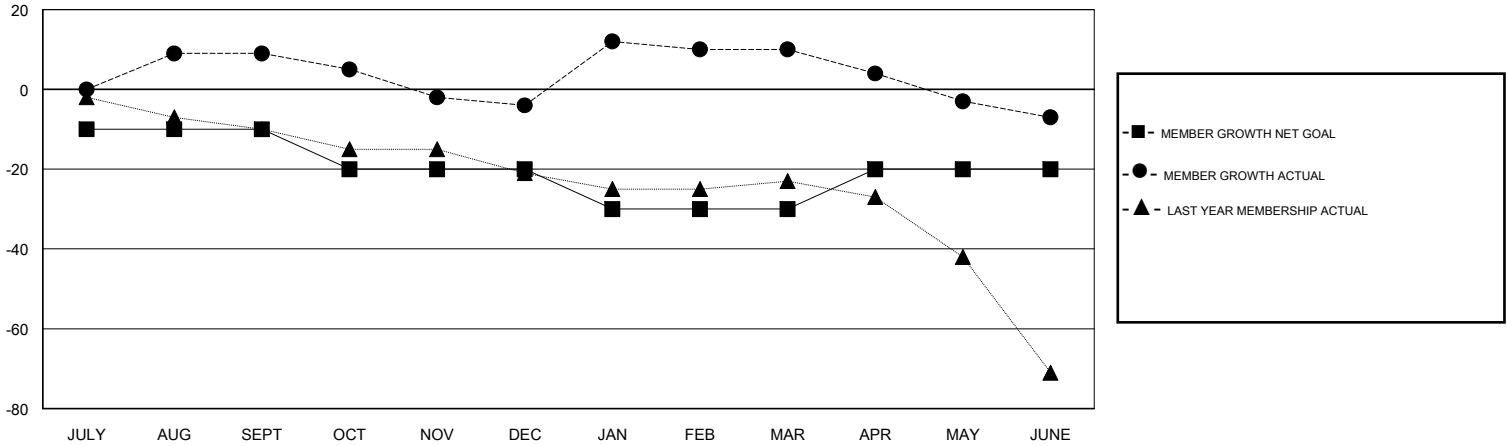
Clubs			
RESULTS FOR 2018-2019			
QUARTER	NEW CLUB GOAL	NEW CLUBS	DROPPED CLUBS
JULY/AUG/SEPT	0	0	1
OCT/NOV/DEC	0	0	0
JAN/FEB/MAR	0	0	0
APR/MAY/JUNE	1	1	0

Members			
RESULTS FOR 2018-2019			
QUARTER	MEMBER GROWTH NET GOAL	MEMBER GROWTH ACTUAL	DROPPED MEMBERS ACTUAL (including transfers)
JULY/AUG/SEPT	-10	25	14
OCT/NOV/DEC	-10	16	28
JAN/FEB/MAR	-10	35	17
APR/MAY/JUNE	10	48	59

GOALS AND ACTUAL NEW CLUBS CUMULATIVE



GOALS AND ACTUAL MEMBERS CUMULATIVE



DROPPED CLUBS: 1	31 CLUBS OF 53 ADDED 1 OR MORE NEW MEMBERS	<u>GENDER DISTRIBUTION</u>	
DROPPED MEMBERS		MALE	501 (67.43%)
DECEASED	10	FEMALE	242 (32.57%)
CLUB CANCELLED	0	Women Percentage Fiscal Year Goal: 40%	
OTHER	108	TOTAL FAMILY UNIT MEMBERS	133
TOTAL	118	FAMILY MEMBERS PAYING HALF DUES	67

[CLICK HERE FOR CUMULATIVE MEMBERSHIP DATA](#)